

Facilities Reinvestment Funding Proposal

One-Time Non-Base Investment Proposal: Step 2

F4

(Please limit the proposal narrative and attachments to 10 pages)

Proposal Name: Library Connection to the Centennial Student Union

1. Provide a description of the project being proposed. (5 points)

Connecting Memorial Library to Centennial Student Union (CSU) has been long overdue since the renovation of the Library 20 years ago, which improved Library facilities but did not physically connect the Library to the campus core. A safe, fully ADA-compliant connection between the CSU and Memorial Library will also improve access, especially during the winter months, to the Office of Disability Services, which has been located in the lower level for more than 10 years. Although a skyway was considered, the option was quickly discarded because it would be too intrusive to the mall openness and it would also be more costly. The proposed underground connection, the most cost-effective option, will also provide a direct pedestrian route for students residing in the Preska, Crawford, and McElroy residence halls to the resources and services housed in the Library and the CSU and to the rest of the campus, regardless of weather conditions. The connection project is envisioned with an outlet into the mall area and can be integrated into the renovation of the iconic fountain and the mall. See attachment A for graphic renderings of the proposed connection.

2. Describe how the project will drive positive transformational change. (10 points)

Minnesota State Mankato is becoming a more pedestrian-friendly campus, and many of its buildings are already inter-connected by walkways, skyways, or tunnels. Based on broad input from students, faculty, and staff, past campus master plans have included this proposed Library-CSU connection. This project will improve all-weather access between the CSU and other connected campus buildings and Library Services, Disability Services, the Center for Academic Success, the ITS Help Desk, and the new Center for Faculty Development. In short, interconnecting buildings is an important piece of the Campus of the Future. In addition to the Library and the CSU, the Office of Disability Services fully supports this proposal.

3. Describe the impact this project will have on students and/or others whom we serve. (10 points)

- The connection will bring Memorial Library and the offices, resources, and services it houses closer to the rest of the campus regardless of weather conditions. Safer and more convenient access in all weather makes the building more accessible to all.
- An important improvement that this project will bring is ADA-compliant access to the Office of Disability Services, located in the lower level of Memorial Library. This office serves more than 800 students annually.
- During the academic year, as many as 5,000 people visit the Library and 9,500 visit the CSU every day, including potential students and community members. With the completion of the Preska Residence Hall and a future additional residence hall nearby, the numbers of students walking through Memorial Library to/from the Union and the rest of the campus will increase significantly and will benefit from having Memorial Library connected to the CSU.
- In particular, the connection will bring more foot traffic to the lower level of the CSU and raise the visibility of offerings and services provided by these various offices.
- All admissions and athletics tours of campus come to the Library. This attractive, sky-lighted, all-weather connection would be an attractive campus feature to highlight.
- The center hub of this connection could provide a small meeting point area with wireless access, plug-in support for laptops, and informational LED screens.
- Every year the Library hosts several hundred students from area high schools who come for research sessions (typically for History Day in the winter). These community members (and prospective students) will benefit from a more direct connection to the CSU and the visitor parking lot/loading zone.

4. Identify the "SMART" outcomes for the project (specific, measurable, achievable, relevant, and time-bound). (5 points)
- **SPECIFIC:** The proposed project will provide safer, more convenient, ADA-compliant access to Library Services, Disability Services, Center for Academic Success, ITS Help Desk and offices, and the new Center for Faculty Development.
 - **MEASURABLE:** The Memorial Library and the offices it houses, as well as the CSU, keep tallies of pedestrian traffic. This project is expected to increase the numbers of daily visitors to these offices, as well as to the lower level of the CSU, maximizing the visibility and use of services and resources available in both buildings. This impact can be readily measured; other impacts are more indirect and related to the quality of campus life, and more specifically academic life.
 - **ACHIEVABLE:** The attached architect's renderings show the feasibility of the proposed connection, if funding is made available (per the budget proposal). Both the CSU and Library Services leadership are committed to leveraging available funds in their units and co-funding this project.
 - **RELEVANT:** Overall enrollment increases in recent years show that Minnesota State Mankato is successful in attracting students. Increasing student satisfaction with the facilities available and providing more convenient access to those should be a positive factor in improving retention:
 - The proposed project fits with the current Campus Master Plan to renovate the mall.
 - The Library offers a wide range of technology and study spaces for MSU students. The CSU is another high traffic building with many services amenities. Connecting the two buildings physically enhances the student experience, impacting student satisfaction and retention.
 - The proposed project will contribute to the overall package of modern facilities that the university already offers, and will be a tangible step forward in demonstrating progress toward the Campus of the Future.
 - **TIME-BOUND:** This is a key timepoint, as construction bids are more affordable than they were several years ago – or surely will be into the future – and both CSU and Library Services have been able to set aside scarce undesignated funds for this purpose.
5. Discuss what this project will do for the university that warrants the investment. (5 points)
- The Library is often referred to as the heart of a campus. At Minnesota State Mankato, the numbers of daily visitors to Memorial Library (more than 5,000 during the academic year) and use of study spaces prove that students see Memorial Library as a destination of choice for learning and collaboration on group projects.
 - Increasing accessibility is of great strategic value to the University (in addition to being required by ADA).
 - The CSU is also a destination of choice with numerous offerings including areas for computer use and collaborative work. A direct connection to the Library will make it easier for students to move between buildings.
 - A pedestrian connection to the CSU will bring the Library, as well as the North residence halls, closer to the core of the campus. It will be a strong step forward toward creating a pedestrian friendly campus and the Campus of the Future.
 - The current proposal leverages considerable funding from the Library and the Centennial Student Union to fund two thirds of the total cost.

6. If applicable, explain how the project addresses significant deferred maintenance. (5 points)

- In light of recent discussions about the need for renovation of the fountain and Campus Mall, this is a great opportunity to undertake this project in conjunction with these design and maintenance projects adjoining the area where the interconnection would be built.
- An integrated renovation of the Campus Mall, the fountain, and possibly this project, should result in long-lasting infrastructure that will have minimal demands for deferred maintenance.
- With respect to future maintenance, the project adds infrastructure that will follow the strict design specifications set by MnSCU and the State of Minnesota to comply with requirements for thermal and moisture protection as well as appropriate drainage.
- The underground connection would provide readily accessible shelter from the mall area in the case of inclement weather.

7. Describe how the activities generated by this project would be sustained after one-time funding has ended, or if applicable, explain why the project does not need to be sustained. (5 points)

- The project is a step forward toward a pedestrian-friendly campus and the Campus of the Future. Maintenance costs would be no different than for similar structures already existing on campus, and this structure may even lower some maintenance costs at the building entrances by reducing outdoor traffic during inclement weather.

8. Budget (5 points):

Outline the funding requested using the categories listed below. Please identify any additional or matching funds that may be available to support the project. Please note, budget revisions beyond 10% total change from the initial proposal require approval. Budget revisions of more than 20%, constitutes a major change in the project scope and will not be approved.

- The connection between Memorial Library and the CSU has been envisioned in past campus master plans as a result of widespread campus input, but considered unfeasible given its cost. **The current proposal leverages \$800,000 in funding from the Library and the Centennial Student Union over three years that will fund two thirds of the total cost of \$1.22 million.**
This proposal requests \$420,000 from One-Time Non-Base Investment Funds.

| | FY12 | FY 12 Matching Funds | FY13 | FY 13 Matching Funds | FY14 | FY14 Matching Funds |
|---|------------|----------------------------|------------------|----------------------------|------------|---------------------------|
| Personnel | | | | | | |
| Unclassified Salary (in-load, overload) | | | | | | |
| Classified Salary | | | | | | |
| Fringe ^a (Classified and Unclassified) | | | | | | |
| Graduate Assistant Salary | | | | | | |
| Graduate Assistant Tuition Reduction/Waiver ^b | | | | | | |
| Non-Salary | | | | | | |
| Student Help | | | | | | |
| Purchased Services/Travel Expenses | | | | | | |
| Supplies and Materials | | | | | | |
| Construction Costs | \$0 | \$200,000 | \$420,000 | \$400,000 | \$0 | \$200,000 |
| Equipment | | | | | | |
| Total Budget Requested | \$0 | | \$420,000 | | \$0 | |

^a Note: All current employees must be paid fringe benefits. Fringe should be estimated based on salary and position classification: Unclassified 30%, Classified 37%, Adjunct 7.65%.

^b Estimated Tuition Reduction/Waiver for full-year enrollment: Masters \$5,858, Doctoral \$10,000.

9. Identify any special considerations or needs required for this project (e.g. physical space, contractual obligations, IT support, or collaborations with/implications for other units). (5 points)

- Both Memorial Library and the Centennial Student Union can easily accommodate this connection to the lower level of each building. Construction should not be a major disruption in either building.
- No contractual obligations with external units other than the university's Facilities Management division are required. Facilities staff have been involved in the preliminary design process to estimate probable project costs as presented in this proposal.
- Even though this connection will primarily be a pass-through area, power outlets and wireless access may be desirable, as appropriate. ITS staff will be asked for input in this regard at the final design stage.
- All participants in the preliminary design process have thoroughly discussed the project and are confident no other special considerations or major non-budgetary resources are required to accomplish the project.

10. Provide a project timeline outlining key tasks, milestones and dates for completion. (5 points)

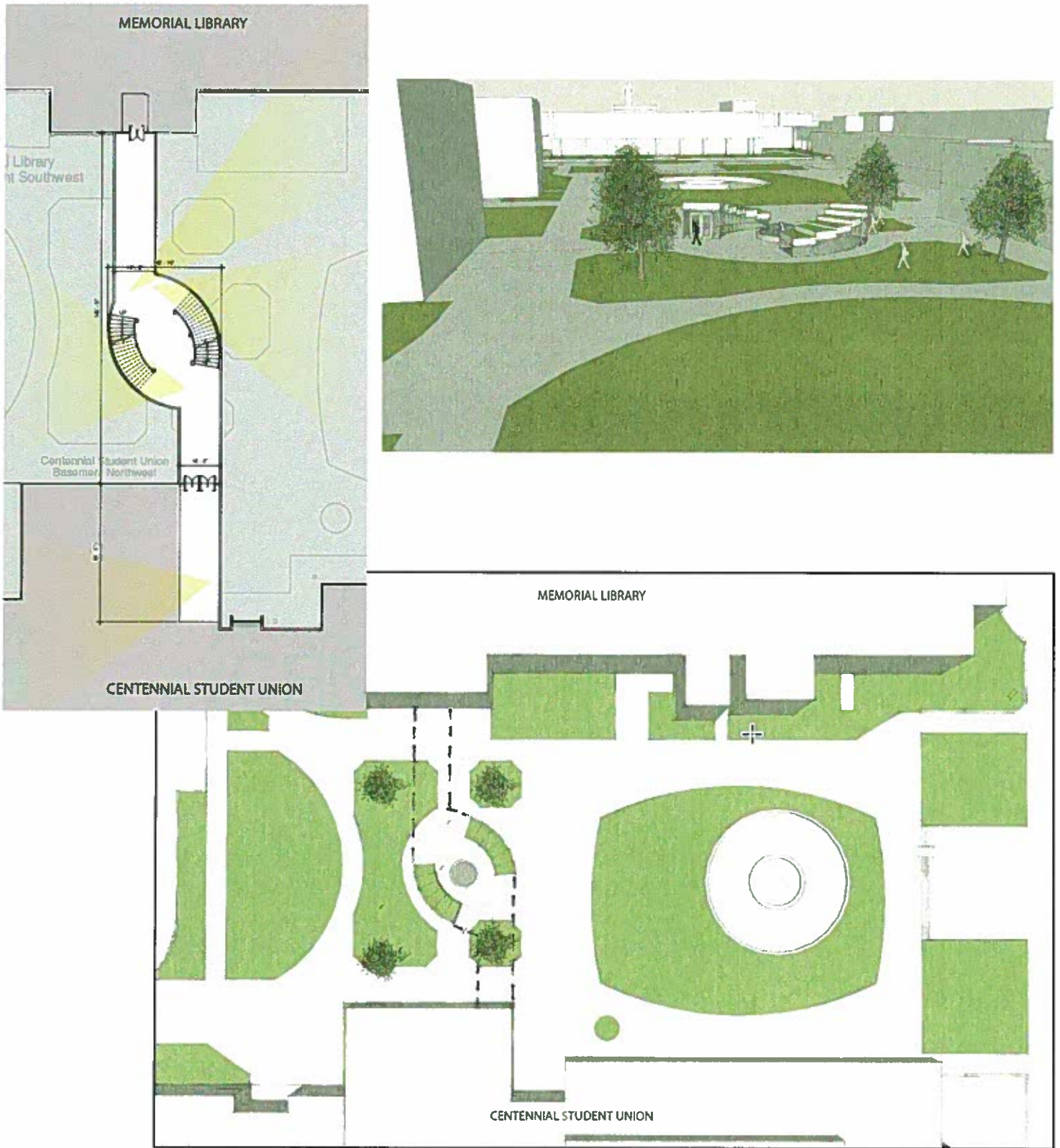
- The project could be completed by September, 2013. The engineering firm estimates the actual construction could be completed within 5 months (see below), assuming the design and approval process would take place in the preceding months.
- Given the state of the local economy it is a good time to engage local firms in bids for this project and possibly complete it below the estimated cost.

DRAFT PROJECT TIMELINE

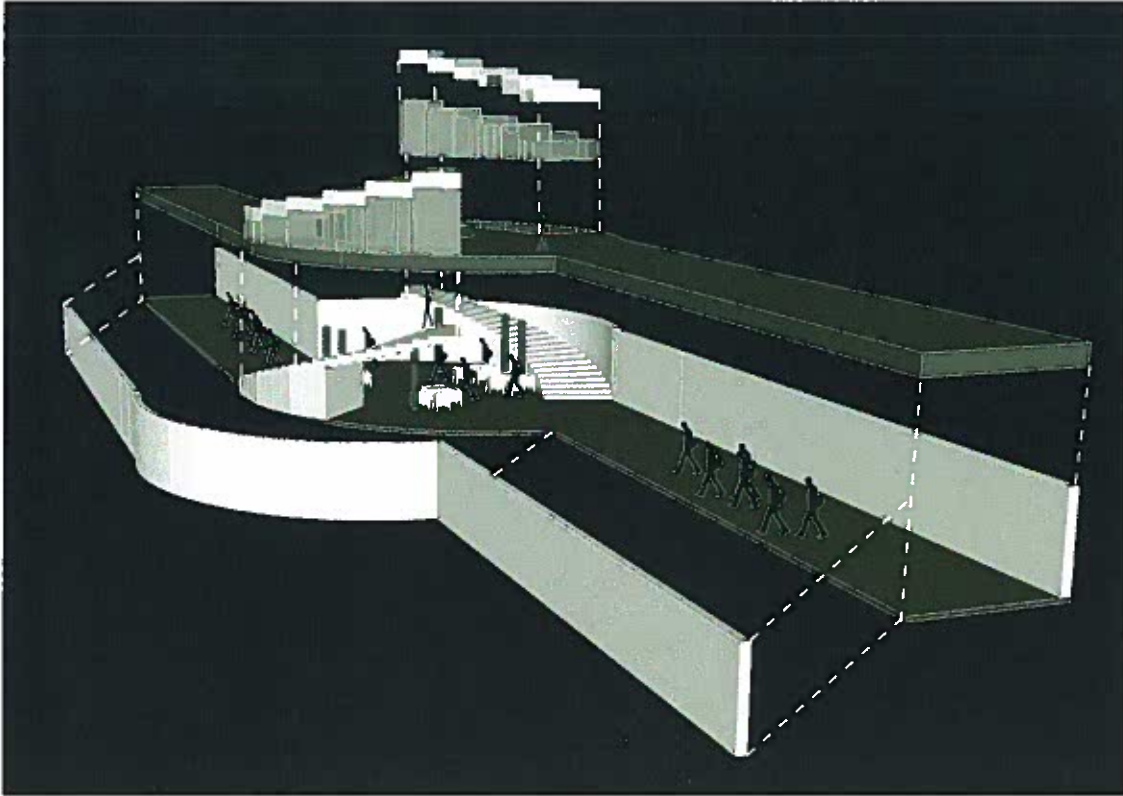
| | |
|----------------------------------|--|
| ○ January 2012 – February 2012 | Project Approval |
| ○ March 2012 – April 2012 | Finalize Schematic Design Drawings & Estimates |
| ○ May 2012 | Schematic Design Review with MnSCU |
| ○ June 2012 – July 2012 | Design Document Preparation |
| ○ August 2012 | Design Document Review with MnSCU |
| ○ September 2012 – November 2012 | Construction Document Preparation |
| ○ December 2012 | Construction Document Review with MnSCU |
| ○ January 2013 | Bidding Period |
| ○ February 2013 | Prepare Contracts |
| ○ March 2013 | Preconstruction Meeting & Shop Drawings |
| ○ April 2013 – August 2013 | Construction Timeframe |
| ○ September 2013 | Project Complete and Available for Use |

ATTACHMENT A

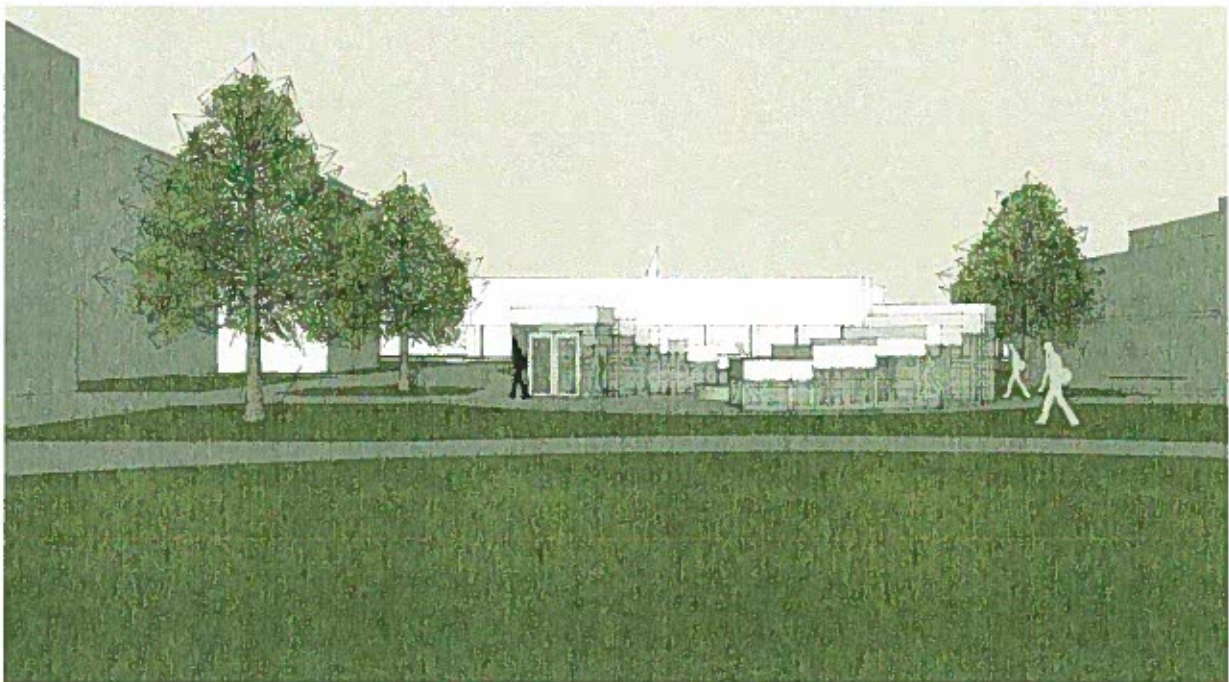
1. Top views of proposed connection, with stairwell outlets to the mall and center circular skylight.



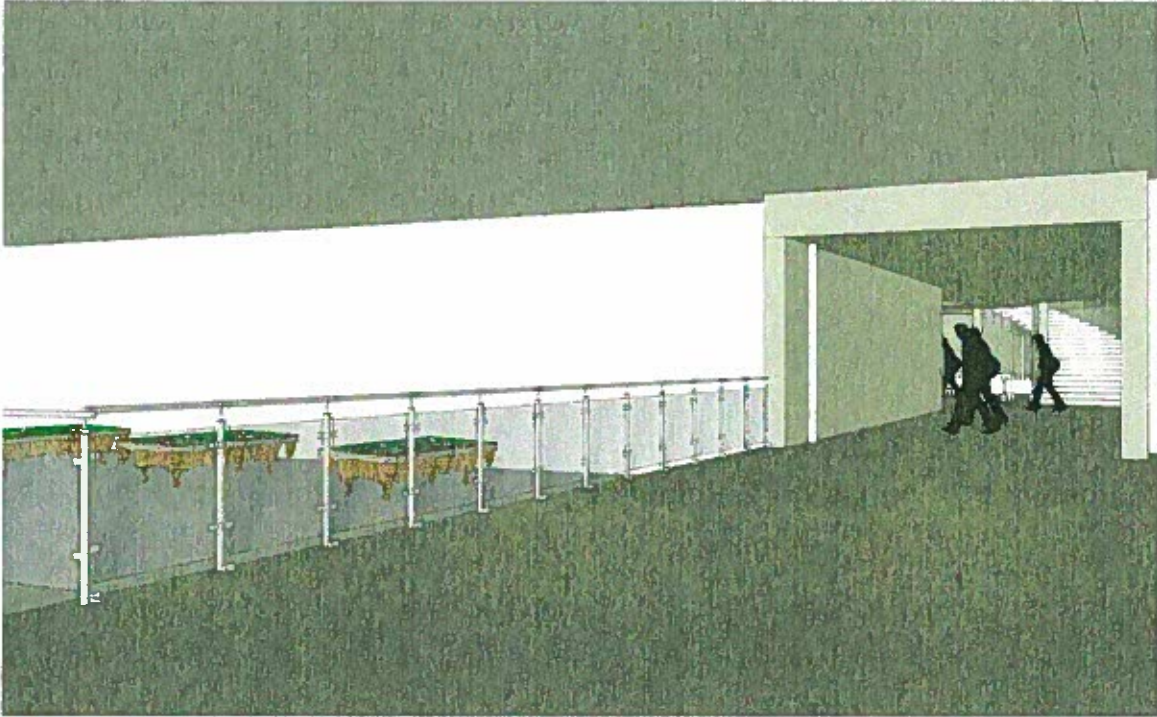
2. Isometric view of the interior of the underground connection (as seen from either side).



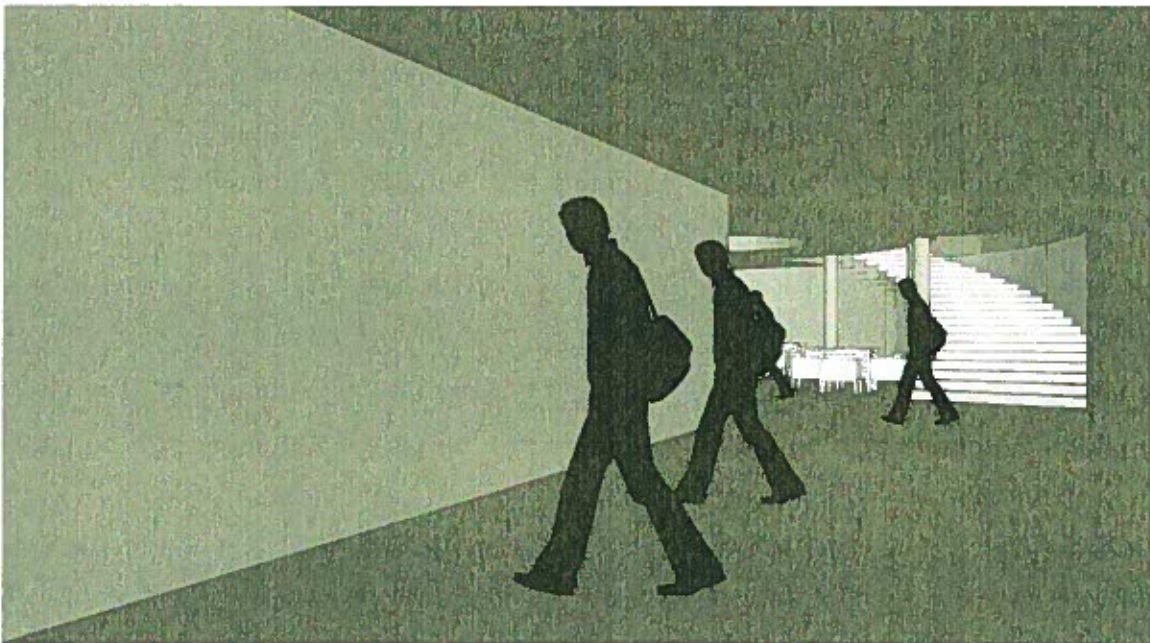
3. Exterior Mall view from the "red lips" sculpture toward the fountain area.



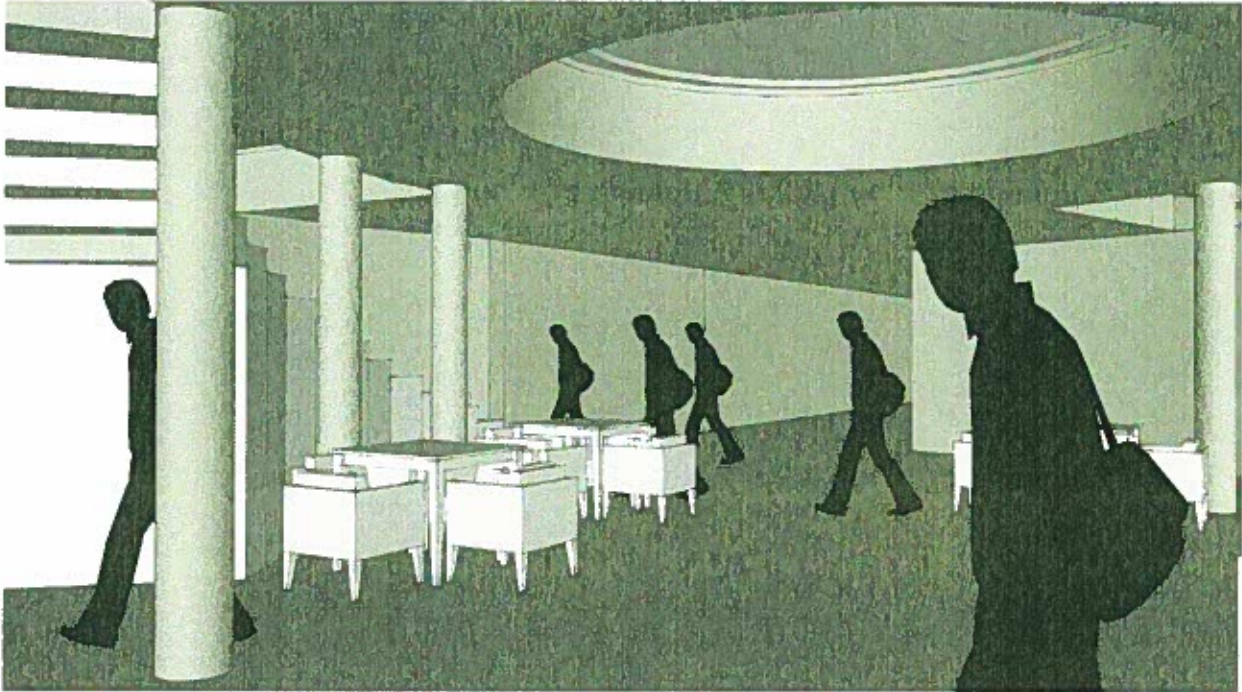
4. Exit from the CSU toward the underground connection.



5. Exit from Memorial Library toward the underground connection.



6. Mid-point of the underground connection with skylight at center.



Note on Advising Proposals:

The following proposals are all submitted on their own merit, and each of them would make an enormous difference for academic advising at Minnesota State Mankato. Together, they address most of the main recommendations of the 2010-11 Advising Taskforce and provide a complete concept for the improvement of advising at our University.

B 11 (Big Ideas; Jason Westman et al.): Academic and Advising Gateway

Bringing together the Center for Academic Success, student support services, disabilities, and possibly also counseling and FYEX in a single location would not only allow most of the offices that help first year students to be successful to work closer together, it would also reduce the “run around” that students often bemoan - there would only be two main locations for them to look for answers: the CSU/Wigley first floor complex with the Hub, Cashier, Financial Aid, and the Registrar, and the proposed Advising Gateway.

B37 (Big Ideas; Nicole Dose et al.): Sophomore and Transfer Success Program

Creating a program and advising unit specifically for sophomores and incoming transfer students would give us great intervention options to improve retention and perseverance during the critical second year after which we see especially worrisome drop-off rates at our campus.

B39 (Big Ideas; Claudia Tomany et al.): Improving Advising: Realizing the 2011 Taskforce’s Three Main Recommendations

Academic Advising is largely decentralized at our University. Creating a central advising position (housed in the Advising Gateway but reporting to the Registrar’s Office) would go a long way to better disseminate information on academic program and policy changes among advisors on campus and create a nexus between the SRC’s, advising faculty, FYEX, student support services, the Registrar, Diversity, and Academic and Student Affairs administration. This central advisor would also supervise the creation and maintenance of an “intelligent” advising website with a self-improving algorithm based on user feedback.

B50 (Big Ideas; Becky Copper-Glenz et al.): Bachelor Completion Advisor

While the student population at 7700 France is growing, no advising services have been established for them. This bachelor completion advisor would address an especially urgent need and serve this specialized population for which there are no existing resources available on campus.

F15 (Facilities; Karen Bunde et al.): Renovate CSU 117 Hub/MavCard/CSU Info Desk

This redesign serves two purposes: to reduce long lines by creating more service stations, and to reorganize the counter space set-up so that students and staff can look at each other while sharing the same screen view.

F28 (Facilities; Joan Roca et al): Library Connection to the Centennial Student Union

If the Advising Gateway in Margaret Preska Hall was connected to the Library and the Library to the CSU, all students would have unprecedented, safe, and ADA-compliant access to residential housing, communal work and recreation spaces, advising, counseling, and library services all around campus.