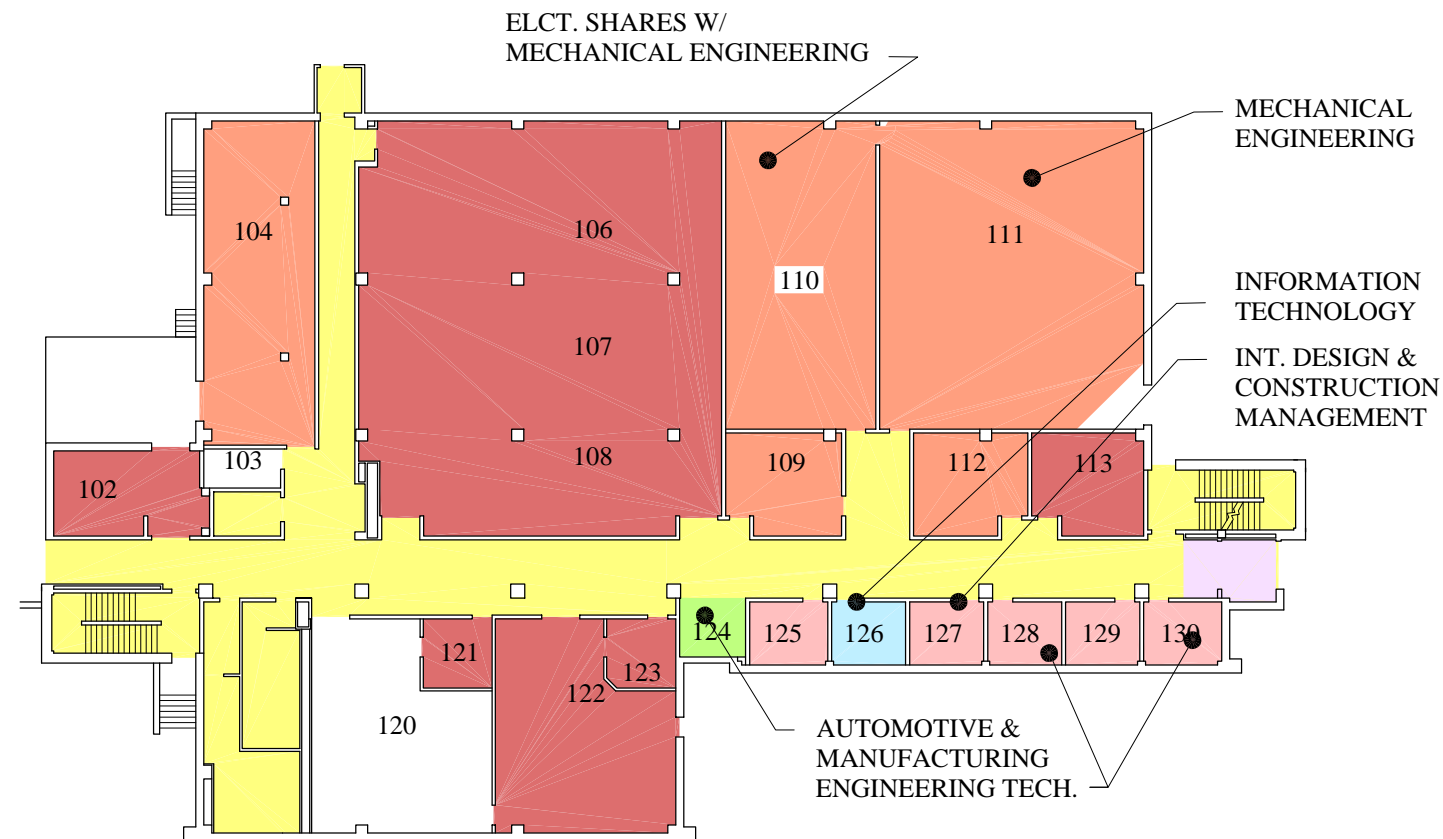


SPACE CATEGORIES

- (01) CLASSROOMS
- (02) DEPARTMENTAL LABORATORY
- (04) RESEARCH LABORATORY
- (05) FACULTY OFFICES
- (06) GENERAL ADMINISTRATION
- (07) PUBLIC SERVICE
- (08) ELECTRONIC DATA PROCESSING
- (09) LIBRARIES
- (10) PHYSICAL EDUCATION
- (12) STUDENT SERVICES
- (13) ASSEMBLY / EXHIBITION
- (14) CENTRAL SERVICES / BUILDING SERVICES
- (16) DAYCARE
- (17) INACTIVE SPACE
- (18) SPECIAL USE FACILITIES
- (00) CIRCULATION

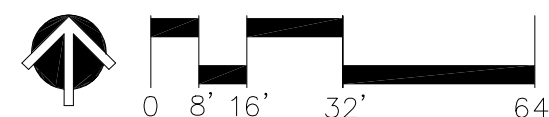



MINNESOTA STATE UNIVERSITY
 MANKATO
TRAFTON EAST
 FIRST FLOOR

EXISTING SPACE USE
 FEBRUARY 2002

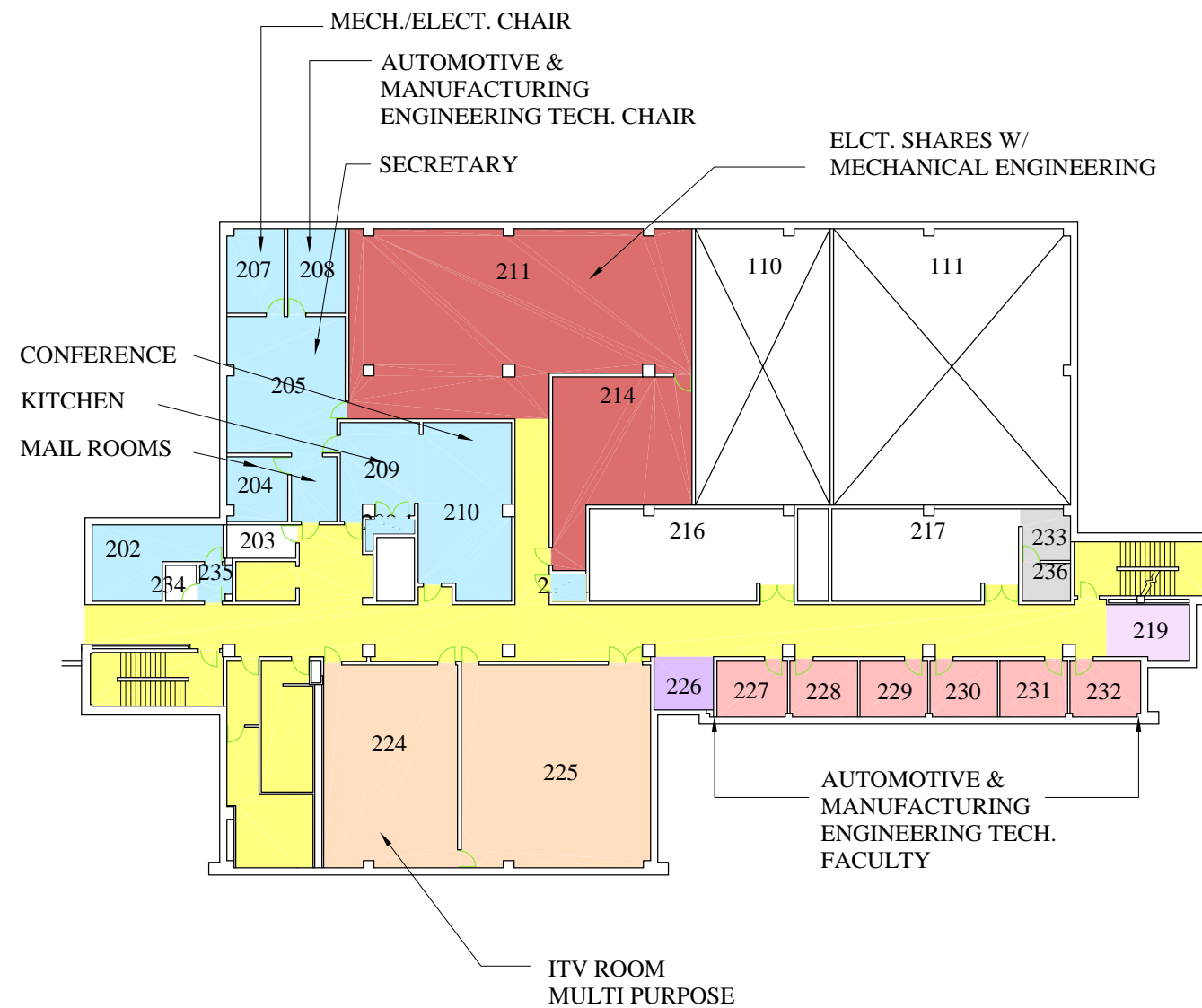


THE SARATOGA ASSOCIATES
 LANDSCAPE ARCHITECTS, ARCHITECTS, ENGINEERS AND PLANNERS, P.C.
 SARATOGA SPRINGS ■ NEW YORK CITY ■ BUFFALO ■ BOSTON



SPACE CATEGORIES

- (01) CLASSROOMS
- (02) DEPARTMENTAL LABORATORY
- (04) RESEARCH LABORATORY
- (05) FACULTY OFFICES
- (06) GENERAL ADMINISTRATION
- (07) PUBLIC SERVICE
- (08) ELECTRONIC DATA PROCESSING
- (09) LIBRARIES
- (10) PHYSICAL EDUCATION
- (12) STUDENT SERVICES
- (13) ASSEMBLY / EXHIBITION
- (14) CENTRAL SERVICES / BUILDING SERVICES
- (16) DAYCARE
- (17) INACTIVE SPACE
- (18) SPECIAL USE FACILITIES
- (00) CIRCULATION

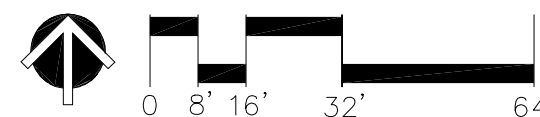



MINNESOTA STATE UNIVERSITY
 MANKATO
TRAFTON EAST
 SECOND FLOOR

EXISTING SPACE USE
 FEBRUARY 2002

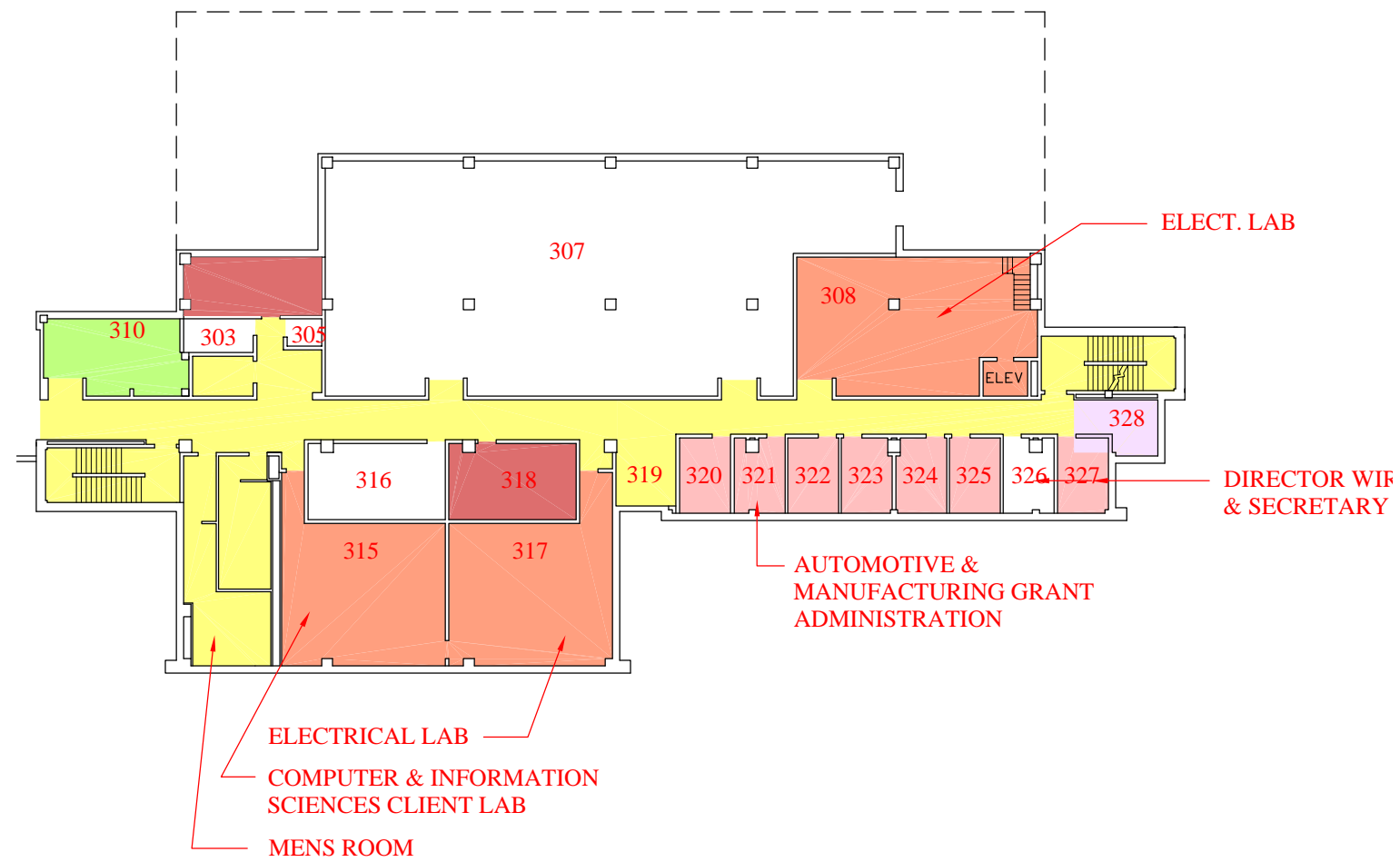


THE SARATOGA ASSOCIATES
 LANDSCAPE ARCHITECTS, ARCHITECTS, ENGINEERS AND PLANNERS, P.C.
 SARATOGA SPRINGS ■ NEW YORK CITY ■ BUFFALO ■ BOSTON



SPACE CATEGORIES

- (01) CLASSROOMS
- (02) DEPARTMENTAL LABORATORY
- (04) RESEARCH LABORATORY
- (05) FACULTY OFFICES
- (06) GENERAL ADMINISTRATION
- (07) PUBLIC SERVICE
- (08) ELECTRONIC DATA PROCESSING
- (09) LIBRARIES
- (10) PHYSICAL EDUCATION
- (12) STUDENT SERVICES
- (13) ASSEMBLY / EXHIBITION
- (14) CENTRAL SERVICES / BUILDING SERVICES
- (16) DAYCARE
- (17) INACTIVE SPACE
- (18) SPECIAL USE FACILITIES
- (00) CIRCULATION



EXISTING SPACE USE
FEBRUARY 2002



THE SARATOGA ASSOCIATES
LANDSCAPE ARCHITECTS, ARCHITECTS, ENGINEERS AND PLANNERS, P.C.
SARATOGA SPRINGS ■ NEW YORK CITY ■ BUFFALO ■ BOSTON

