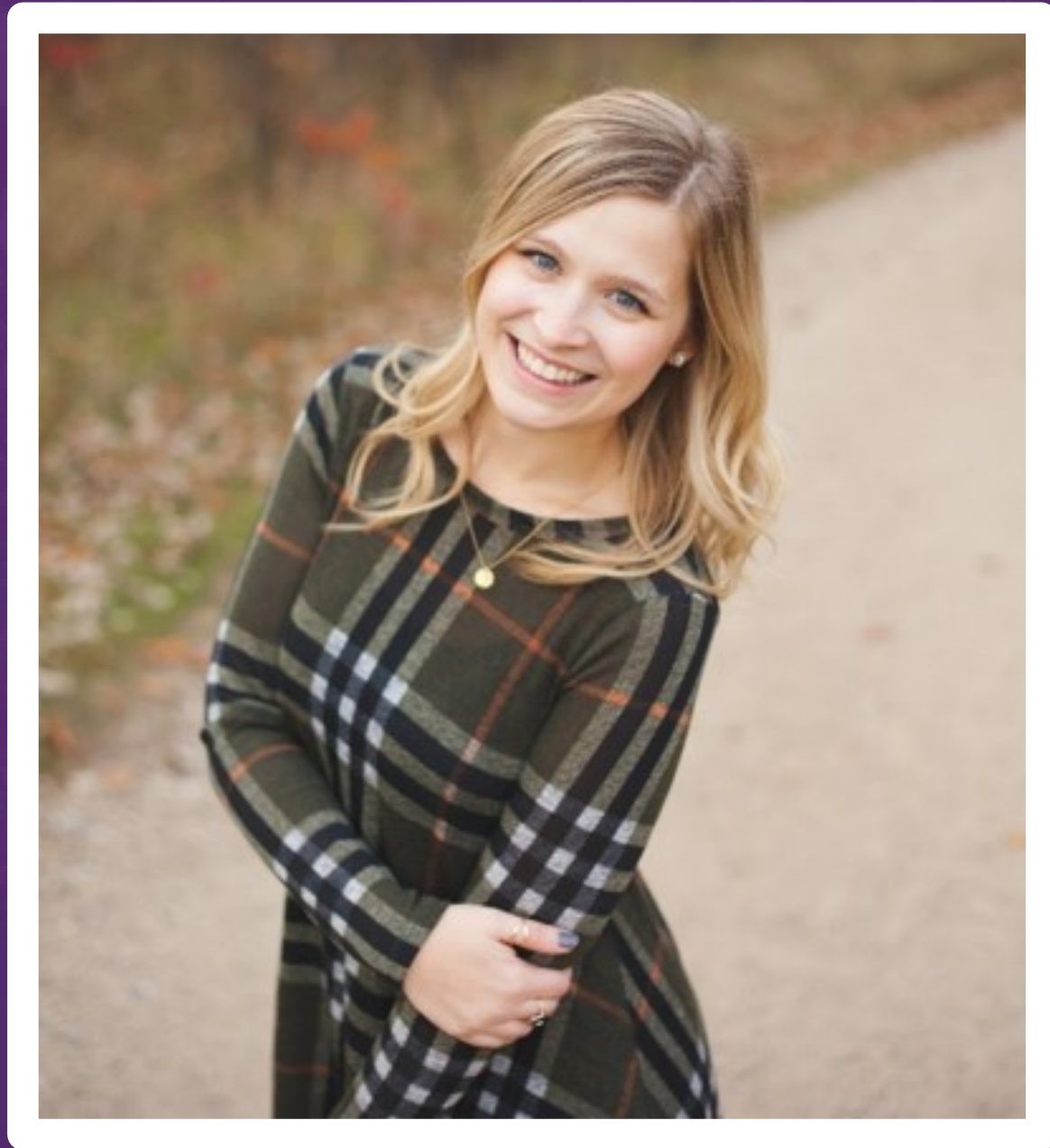




MINNESOTA STATE  
UNIVERSITY  
MANKATO





**Tressa Roehm**  
Transfer Liason





MANNKATO





85 MILES SOUTH OF TWIN CITIES METRO



150+ YEARS OF EXCELLENCE



130+ UNDERGRADUATE PROGRAMS



200+ STUDENT ORGANIZATIONS



14,500 STUDENT POPULATION



NATIONAL LEADER IN UNDERGRADUATE Research



93% JOB PLACEMENT



20:1 STUDENT: FACULTY RATIO



# Programs of Study

---

## Top 5 Majors

- Biology
- Nursing
- Psychology
- Business Management
- Elementary Education

## Unique Majors

- Aviation
- Construction Management
- Sports Management
- Dental Hygiene
- Theatre





# University Services

## Academic



- Career Development Center
- Center for Academic Success
- Learning Communities
- Accessibility Resources

## Campus



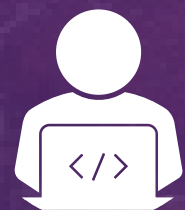
- Campus Security
- Student Financial Services
- Barnes & Noble Bookstore
- Parking Services

## Health



- Campus Wellness
- Counseling Center
- Dental Clinic
- Student Health Services

## Technology



- Campus Computer Store
- IT Solutions
- Academic Computer Center

## Diversity



- LGBTQIA+ Center
- Multicultural Center
- Veteran's Center
- Women's Center

## Activities



- Campus Recreation
- Student Events Team
- Recognized Student Organizations

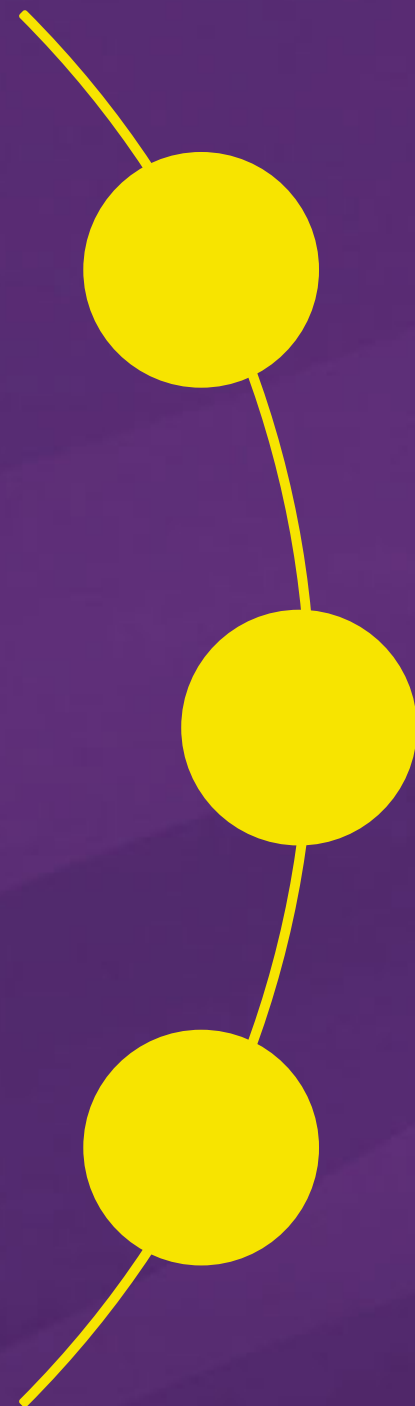
# Applying for Admission

---

## Automatic Admissions Requirements

For students with at least 24 transferrable, college-level credits

Unique situations will be reviewed on a case-by-case basis.



2.0+ Cumulative GPA

24 Transferrable Credits

67% Completion Rate



# Applying for Admission

---

## Automatic Admissions Requirements

For students with at less than 24 transferrable, college-level credits

Unique situations will be reviewed on a case-by-case basis.

2.0+ Collegiate GPA

AND

Top 50% of high school class

OR

Cumulative GPA of 3.0

OR

21 composite ACT score

(with satisfactory GPA of 2.7)





# Applying for Admission

---

## Application Process

- Deadline to submit documents is 5 days prior to start of classes
- Processing can take up to 10 business days
- Admissions decision is emailed

Complete online application

Submit \$20 application fee

Submit collegiate transcripts

**If less than 24 credits:**

Submit high school transcripts and ACT scores



# Credit Transfer

---

## Degree Audit Report

- Credit evaluation generated within 10 business days of acceptance
- Find DARS in E-Services Account

## Helpful Resources

- Estimate credit transfer at: [Transferology.com](http://Transferology.com)
- Find Articulation Agreements at: [MNtransfer.org](http://MNtransfer.org)
- Learn more about our [Transfer Curriculum](#)

## Contact Office of the Registrar

Phone: 507-389-6266

Online Form: [onestop.mnsu.edu/app/registrar](http://onestop.mnsu.edu/app/registrar)



# Orientation & Advising

---

## Transfer Orientation

- **Mandatory** unless completed a Bachelor's degree prior
- Fall, Spring, & Summer opportunities
- Advising & Registration included

RECEIVE ACCEPTANCE



CONFIRM ENROLLMENT



REGISTER FOR ORIENTATION ONLINE



[newstudent@mnsu.edu](mailto:newstudent@mnsu.edu)

## Advising & Registration

- Assigned advisor from your department will help you register for classes
- Items to consider:
  - Program requirements
  - Majors and minors
  - When to apply to major
  - General questions for the department



[advising@mnsu.edu](mailto:advising@mnsu.edu)



# Academic Year Costs

---



## Minnesota, Wisconsin & Manitoba

- Tuition & Fees: \$8,438
- Total\*: \$18,267

## South Dakota

- Tuition & Fees: \$9,225
- Total\*: \$19,054

## Nebraska, Missouri, Kansas, Illinois, Ohio & Indiana

- Tuition & Fees: \$12,134
- Total\*: \$21,963

## North Dakota

- Tuition & Fees: \$9,287
- Total\*: \$19,116

## Out-of-State

- Tuition & Fees: \$16,730
- Total\*: \$26,559

## Room & Meals

- Renovated Double: \$6,824
- Maverick Anytime: \$3,005
- Average Total: \$9,829\*

# Financial Aid

---

## FAFSA: Free Application for Federal Student Aid

- Grants, Loans and Work Study

- University Code: 002360

**October 1st:**  
Application  
Opens

**Spring:**  
Preliminary  
Award Letters

**Summer:**  
Final Award  
Letters

Student Financial Services

[campushub@mnsu.edu](mailto:campushub@mnsu.edu)

507-389-1866



# Scholarships

---

## Scholarship Finder at [mnsu.academicworks.com](https://mnsu.academicworks.com)

- University-wide scholarships that you may be eligible for
- **Phi Theta Kappa**
  - Two scholarships of \$500 each will be awarded for one year
  - Must be a member of the Phi Theta Kappa Honor Society at a 2-year college
- **Maverick (Fall Only)**
  - 3.0 cumulative GPA required on official evaluation from Registrar's
  - Completion of Associates/MnTC
- **Other Opportunities**
  - In-State Tuition
    - 24+ transferrable credits and 3.5+ cumulative GPA
  - Talent Grants
  - Athletic Awards
  - Departmental





# Housing

- **Not required, but highly recommended**
  - 90% of first-year students live on campus
- **Five Residence Communities**
  - Julia A. Sears
  - Margaret R. Preska
  - Crawford
  - McElroy
  - Stadium Heights
- **Off-Campus Housing**



# Room Types

---



## Basic

- Economical Option: \$6,204/year
- Shared Community Bathroom
- No A/C
- Located in Crawford and McElroy

## Semi-Suite

- Double: \$7,960/year
- Semi-Private Bathroom
- A/C included
- Located in Julia A. Sears & Preska

## Renovated Double

- \$6,824/year
- Shared Community Bathroom
- A/C included
- Located in Crawford, McElroy & Preska

## Apartment-Style

- \$6,824-8,255/year
- 3-, 4-, and 5-person options
- Parking and A/C included
- Off-Campus at Stadium Heights



# Parking & Transportation

---

## Parking

- Rates vary depending on lot location
- Day Parking
  - Free Lot
  - Purple
  - Orange
- Residence Halls
  - Light Green
  - Dark Green

## Transportation

- University Bus System
  - Included in Student Fees
- City of Mankato Bus System
  - Offers services for MSU Students
- Land to Air Express
  - Connects Southern MN to various parts along Hwy 169



# New Student Checklist

---

- ✓ Submit Application
- ✓ Credit Transfer
- ✓ Confirm Enrollment
- ✓ Submit FAFSA
- ✓ Scholarship Search
- ✓ Orientation & Advising
- ✓ Housing Application



# Thank You for Joining Us!

---



Chat!

Q&A and Chat features will remain open for 5-10 minutes!



Contact us!

admissions@mnsu.edu  
507-389-1822



Connect!



@mnstatemankato



@MNSUMankato



/MNStateMankato



/MNStateMankato